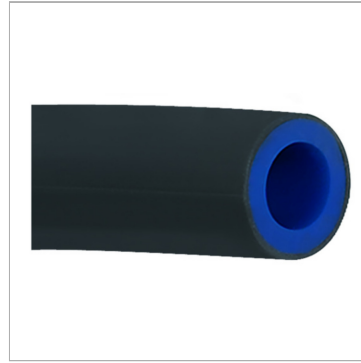


### Характеристики

<b>Рабочее давление</b>	Dependent on temperature: 12 bar at 24 °C, 5 bar at 66 °C
<b>Цвет</b>	черный
<b>Температура</b>	-40 °C to +70 °C



### Указания

Прочие данные только по запросу.

### Описание

Blue polyurethane hose with an outer sheath made of black synthetic resin material. This sheath protects the inner PU tube from welding sparks. The sheath is not attached to the inner tube and can therefore be easily removed to enable conventional fittings to be installed. Protects against welding sparks, extremely flexible and non-kinking, resistant to a large number of chemicals, oils, greases, acids, bases, heat, ageing, UV light.

### Артикул

Наименование	Внутренний Ø шланга	Внешний Ø шланга	Толщина стенок
<a href="#">K-07100359</a>	4,0	6,0	1,0
<a href="#">K-07100360</a>	5,0	8,0	1,5
<a href="#">K-07100361</a>	8,0	12,0	2,0