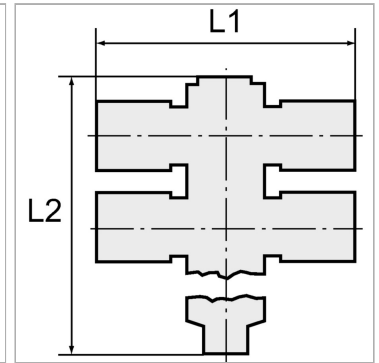


Tee distributors with inner hex, 6 outlets, swivel type, conical male thread, coated

Обновлено: 05.05.24

Характеристики

Рабочее давление	Max. 15 bar, coarse vacuum
Область температур	-20 °C to +80 °C
Рабочие среды	Compressed air and all gases or liquids that are compatible with the materials
рекомендуемые шланги	PU or PA (nylon)
Область применения	Air, vacuum
Уплотнительная поверхность	Conical version: thread coating
Материал	Plastic, Nickel plated brass
Прижимное кольцо	Plastic



Указания

Прочие данные только по запросу.

Описание

Push-in fittings series manufactured in plastic and nickel-plated brass. All parts are suitable for use with hoses, tubes or pipes made of plastic and copper.

Артикул

Наименование	Внутренний шестигранник	Резьба	L1	L2
K-07400649	4,0	R 1/8	45,0	59,6
K-07400650	4,0	R 1/8	43,0	59,6
K-07400651	4,0	R 1/8	49,0	59,6
K-07400646	6,0	R 1/4	47,0	81,0
K-07400647	6,0	R 1/4	52,0	81,0
K-07400643	6,0	R 1/4	59,8	81,0
K-07400644	6,0	R 1/4	61,6	81,0
K-07400655	8,0	R 3/8	57,0	83,7
K-07400652	8,0	R 3/8	63,8	83,7
K-07400653	8,0	R 3/8	65,6	83,7