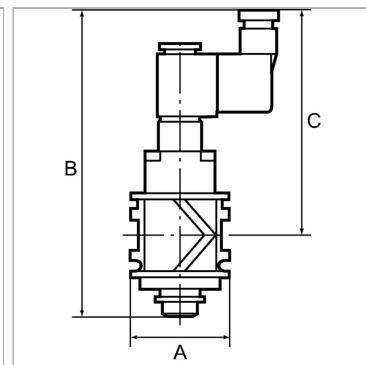


Характеристики

Степень защиты	IP 65 acc. to DIN 40050
Рабочее давление	3 to 10 bar
Измерение расхода воздуха	At P1 = 6 bar and pressure drop Δp = 1 bar



Указания

Прочие данные только по запросу.

Описание

For pressurising and relieving pneumatic systems. Ideal as the main "on" valve for service units. The pressure in the line is exhausted when the valve is switched off.

Артикул

Наименование	Резьба	Расход ном.	A	C	B
K-07251194	G 1/4	2200	48,0	108,0	147,0 mm
K-07251195	G 3/8	2600	48,0	108,0	147,0 mm
K-07251196	G 1/2	3300	70,0	113,0	157,0 mm
K-07251197	G 3/4	3800	70,0	113,0	157,0 mm
K-07251198	G 1	3800	124,0	113,0	157,0 mm