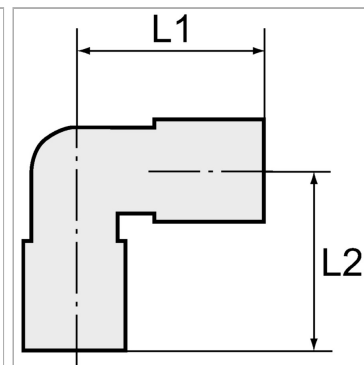


Характеристики

| | |
|-----------------------------------|--|
| Рабочее давление | Max. 15 bar, coarse vacuum |
| Область температур | -20 °C to +80 °C |
| Рабочие среды | Compressed air and all gases or liquids that are compatible with the materials |
| рекомендуемые шланги | PU or PA (nylon) |
| Область применения | Air, vacuum |
| Уплотнительная поверхность | Parallel version: O-ring in housing |
| Материал | Plastic, Nickel plated brass |
| Прижимное кольцо | Plastic |



Указания

Прочие данные только по запросу.

Описание

Push-in fittings series manufactured in plastic and nickel-plated brass. All parts are suitable for use with hoses, tubes or pipes made of plastic and copper.

Артикул

| Наименование | Резьба | L1 | L2 |
|----------------------------|--------|------|------|
| K-07400566 | M 5 | 17,5 | 18,5 |
| K-07400567 | M 5 | 18,7 | 19,7 |
| K-07400579 | G 1/8 | 17,7 | 23,0 |
| K-07400580 | G 1/8 | 18,7 | 24,4 |
| K-07400581 | G 1/8 | 22,5 | 27,3 |
| K-07400578 | G 1/8 | 27,2 | 27,3 |
| K-07400575 | G 1/4 | 17,5 | 26,0 |
| K-07400576 | G 1/4 | 18,7 | 27,4 |
| K-07400577 | G 1/4 | 22,5 | 30,3 |
| K-07400573 | G 1/4 | 27,2 | 34,3 |
| K-07400574 | G 1/4 | 29,3 | 37,0 |
| K-07400585 | G 3/8 | 18,7 | 28,7 |
| K-07400586 | G 3/8 | 22,5 | 32,0 |
| K-07400582 | G 3/8 | 27,2 | 36,3 |
| K-07400583 | G 3/8 | 29,3 | 38,0 |
| K-07400584 | G 3/8 | 32,5 | 40,5 |
| K-07400571 | G 1/2 | 18,7 | 34,2 |
| K-07400572 | G 1/2 | 22,5 | 34,3 |
| K-07400568 | G 1/2 | 27,2 | 38,8 |
| K-07400569 | G 1/2 | 29,3 | 40,5 |
| K-07400570 | G 1/2 | 32,5 | 43,0 |