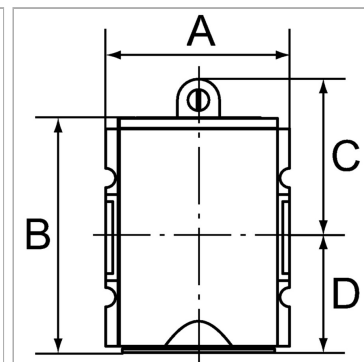


### Характеристики

<b>Входное давление</b>	2.5 - 16 bar
<b>Область температур</b>	-10 °C to +50 °C
<b>Рабочие среды</b>	Сжатый воздух
<b>Корпус</b>	Material: Grivory® (PA 66)
<b>Измерение расхода воздуха</b>	At P2 = 6 bar, pressure drop $\Delta p$ = 1 bar
<b>Дополнительная информация</b>	siehe 3/2-Wegeventil und Befülleinheit siehe 3/2-Wegeventil und Befülleinheit
<b>Соединительная резьба</b>	Material: Die-cast zinc



### Указания

Прочие данные только по запросу.

### Описание

Seat valves operated by secondary pressure for controlled pressurisation of pneumatic systems. These valves prevent a sudden build-up of pressure accompanied by dangerous, jerky cylinder movements. The full cross-section of the regulator is opened at 50% of the input pressure. The filling time can be altered by turning the adjusting screw.

### Дополнительная информация

See 3/2-way valves and filling units See 3/2-way valves and filling units

### Артикул

Наименование	D	Резьба	Расход ном.	A	C	B
<a href="#">K-07251111</a>	33,0	G 1/4	1300	52,0	45,0	78,0 mm
<a href="#">K-07251112</a>	33,0	G 3/8	1300	52,0	45,0	78,0 mm
<a href="#">K-07251113</a>	58,0	G 3/8	3400	63,0	53,5	111,5 mm
<a href="#">K-07251114</a>	58,0	G 1/2	3400	63,0	53,5	111,5 mm
<a href="#">K-07251115</a>	54,0	G 3/4	8750	85,0	58,0	112,0 mm
<a href="#">K-07251116</a>	54,0	G 1	8750	85,0	58,0	112,0 mm