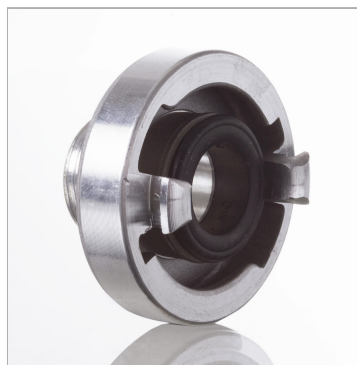


### Характеристики

|                           |   |
|---------------------------|---|
| <b>Форма уплотнения 1</b> | Плоское уплотнение                        |
| <b>Соединение 1</b>       | Наружная резьба BSP,<br>цилиндрическая    |
| <b>Форма уплотнения 2</b> | Фасонное уплотнение из нитрила,<br>черное |
| <b>Соединение 2</b>       | Кулачковая муфта                          |
| <b>Модель</b>             | Жесткая муфта с наружной резьбой          |
| <b>Материал</b>           | алюминий                                  |



### Артикул

| Наименование                    | Соединительная резьба | Номинальная величина Storz |
|---------------------------------|-----------------------|----------------------------|
| <a href="#">FKKG31HR20DAL</a>   | G 3/4" -14            | 25-D                       |
| <a href="#">FKKG31HR25DAL</a>   | G 1" -11              | 25-D                       |
| <a href="#">FKKG31HR32DAL</a>   | G 1.1/4" -11          | 25-D                       |
| <a href="#">FKKG44HR25AL</a>    | G 1" -11              | 32                         |
| <a href="#">FKKG44HR32AL</a>    | G 1.1/4" -11          | 32                         |
| <a href="#">FKKG52HR32AL</a>    | G 1.1/4" -11          | 38                         |
| <a href="#">FKKG52HR40AL</a>    | G 1.1/2" -11          | 38                         |
| <a href="#">FKKG52HR50AL</a>    | G 2" -11              | 38                         |
| <a href="#">FKKG66HR25CAL</a>   | G 1" -11              | 52-C                       |
| <a href="#">FKKG66HR32CAL</a>   | G 1.1/4" -11          | 52-C                       |
| <a href="#">FKKG66HR40CAL</a>   | G 1.1/2" -11          | 52-C                       |
| <a href="#">FKKG66HR50CAL</a>   | G 2" -11              | 52-C                       |
| <a href="#">FKKG66HR65CAL</a>   | G 2.1/2" -11          | 52-C                       |
| <a href="#">FKKG81HR40AL</a>    | G 1.1/2" -11          | 65                         |
| <a href="#">FKKG81HR50AL</a>    | G 2" -11              | 65                         |
| <a href="#">FKKG81HR65AL</a>    | G 2.1/2" -11          | 65                         |
| <a href="#">FKKG81HR75AL</a>    | G 3" -11              | 65                         |
| <a href="#">FKKG89HR50BAL</a>   | G 2" -11              | 75-B                       |
| <a href="#">FKKG89HR65BAL</a>   | G 2.1/2" -11          | 75-B                       |
| <a href="#">FKKG89HR75BAL</a>   | G 3" -11              | 75-B                       |
| <a href="#">FKKG105HR75AL</a>   | G 3" -11              | 90                         |
| <a href="#">FKKG115HR100AL</a>  | G 4" -11              | 100                        |
| <a href="#">FKKG133HR100AAL</a> | G 4" -11              | 110-A                      |
| <a href="#">FKKG160HR150AL</a>  | G 6" -11              | 150                        |