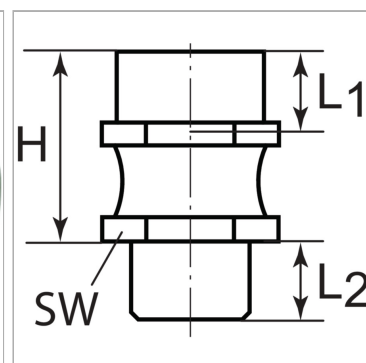


Характеристики

Особые признаки very good adaptation to oblique workpiece surfaces
automatic Rückstellung in die Ausgangslage
vacuum-tight design with integrated protection against damage

Применение For handling of workpieces with sloping using large-area vacuum gripper
Handling of large plates that can sag when lifting
In combination with spring plungers to compensate height-differences and Unevenness



Информация о продукте

Резьба 1 внутренняя	G 1/4	L2	8 mm
Резьба 2 наружная	M 10 x 1,25	L1	10.5 mm
Материал	Steel, rubber	Угол W	12 °
Материал	Steel, rubber	Вертикальная нагрузка	500 N/m ²
H	27 mm	Момент изгиба	8 N/m ²
L2	8 mm	SW	17 mm

Указания

Прочие данные только по запросу.

Описание

Flexible suction pad mounting. By flexing in all directions, this mounting allows the suction pad to better adapt itself to sloping workpieces.