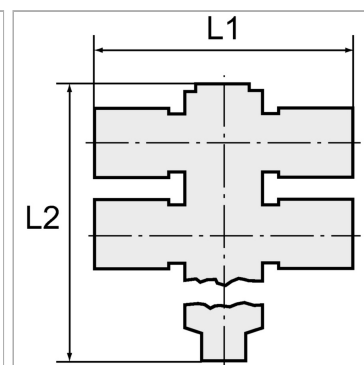


Tee distributors with inner hex, 4 outlets, swivel type, conical male thread, coated

Характеристики

| | |
|-----------------------------------|--|
| Рабочее давление | Max. 15 bar, coarse vacuum |
| Область температур | -20 °C to +80 °C |
| Рабочие среды | Compressed air and all gases or liquids that are compatible with the materials |
| рекомендуемые шланги | PU or PA (nylon) |
| Область применения | Air, vacuum |
| Уплотнительная поверхность | Conical version: thread coating |
| Материал | Plastic, Nickel plated brass |
| Прижимное кольцо | Plastic |



Информация о продукте

| | |
|--------------------------------|-------|
| Резьба | R 1/8 |
| для наружного Ø шланга | 6mm |
| Внутренний шестигранник | 4 mm |

| | |
|-----------|---------|
| L2 | 44.3 mm |
| L1 | 42.6 mm |
| SW | 14 mm |

Указания

Прочие данные только по запросу.

Описание

Push-in fittings series manufactured in plastic and nickel-plated brass. All parts are suitable for use with hoses, tubes or pipes made of plastic and copper.