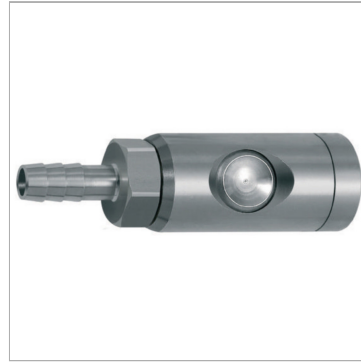


Safety couplings DN 7.4, stainless steel 1.4404, with hose stem, swivel type

Обновлено: 05.02.24

Характеристики

Рабочее давление	макс. 10 бар
Кнопка, клапан	Stainless steel 1.4404
Корпус	Stainless steel 1.4404
Резьба	Stainless steel 1.4404
Температура среды	-20 °C to +150 °C
Внутренние детали	Stainless steel 1.4404
Уплотнение	FKM



Дополнительная информация Nicht geeignet für schlagende/pulsierende Werkzeuge.
Der angegebene Betriebsdruck bezieht sich nur auf die Kupplung und ist abhängig von den gewählten Anschlussarten.

Информация о продукте

Расход пот.	1800 l/min	Соединение	Stem, I.D. 9
SW	21 mm	Длина	88.5 mm

Указания

Прочие данные только по запросу. Not suitable for hitting / pulsating tools.

Описание

High-quality, robust and durable, one-hand quick disconnect safety couplings for high flow rates. When it is pressed for the first time, air is relieved from the coupling but the plug in the coupling remains locked. The plug is only disconnected when the pushbutton is pressed for the second time. The dreaded "whiplash effect" is avoided and the risk of injury to the operator virtually eliminated. The safety version conforms to ISO-Standard DIN EN ISO 4414. For the food processing, chemical and medical industries as well as pharmaceutical plant construction.

Дополнительная информация

Not suitable for hitting / pulsating tools.