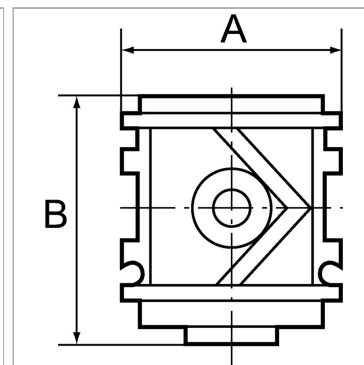
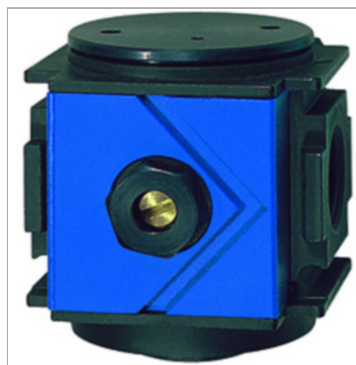


Характеристики

Рабочее давление	2 - 25 bar
Измерение расхода воздуха	At P1 = 6 bar and pressure drop Δp = 1 bar



Информация о продукте

Резьба	G 3/8
Расход пот.	1400 l/min
Рабочее давление, бар	2 - 25 bar

Рабочее давление, бар	2 - 25 bar
A	48 mm
B	54,0 mm

Указания

Прочие данные только по запросу.

Описание

For slow pressure build-up in pneumatic systems, e.g. after an emergency stop. The valve opens to full flow at approximately 60% of the set operating pressure.

The filling time can be set by turning the adjusting screw. Used in combination with multi-piece service units.