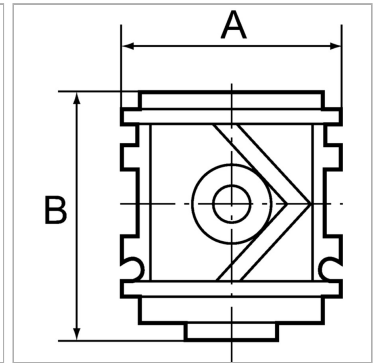
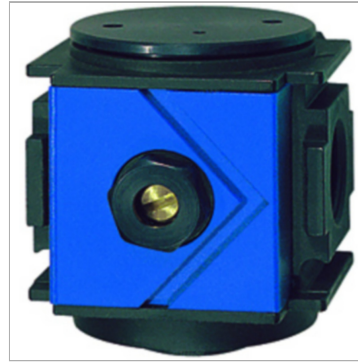


### Характеристики

<b>Рабочее давление</b>	2 - 25 bar
<b>Измерение расхода воздуха</b>	At P1 = 6 bar and pressure drop $\Delta p$ = 1 bar



### Информация о продукте

<b>Резьба</b>	G 1/4
<b>Расход пот.</b>	1200 l/min
<b>Рабочее давление, бар</b>	2 - 25 bar

<b>Рабочее давление, бар</b>	2 - 25 bar
<b>A</b>	48 mm
<b>B</b>	54,0 mm

### Указания

Прочие данные только по запросу.

### Описание

For slow pressure build-up in pneumatic systems, e.g. after an emergency stop. The valve opens to full flow at approximately 60% of the set operating pressure.

The filling time can be set by turning the adjusting screw. Used in combination with multi-piece service units.