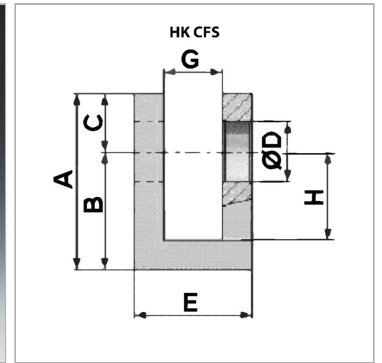


Характеристики

Материал Сталь S355J0 (Fe510C)



Информация о продукте

| | |
|----------|-------|
| E | 40 mm |
| C | 20 mm |
| B | 40 mm |
| G | 20 mm |

| | |
|---------------|----------|
| Ø D | 20.25 mm |
| A | 60 mm |
| H | 30 mm |
| Ширина | 40 mm |